

WITH AND ABOUT FLORIN DRAȘOVEAN

FLORIN GOGÂLTAN*

This is not a *laudatio*. Benefiting from the understanding of the editors of the present volume, I set out to write a few thoughts – both the good and the bad – about Professor Florin Drașovean as I have known him throughout the 35 years since we first met. We were close, then we grew apart, came close again and grew apart yet again, sailing on the troubled professional and spiritual waters that brought us here. Those aware of the ups and the more notorious downs of our relationship may wonder why I wanted to write this. The answer is simple: because there is a story to tell.

We first met at the end of 1985, in Florin Medeleț's office at the Museum of Banat in Timișoara. Returning from the winter holiday, I had been about to report to my boss how my first semester in the History and Philosophy Department of the University of Cluj-Napoca had gone. First, however, he introduced me to a colleague that had been employed there the year before, one whom he thought represented the future of Neolithic archaeology in Banat. He hoped that Drașovean would not let him down or prove the trust invested in him wrong. These words were addressed to him, of course. Drașovean and I became friends right away and had plenty to talk about: student life in Cluj¹ and, naturally, archaeology. Although the age difference between us was 11 years, we were on a first-name basis. Times were hard, and his bed was initially set out in his office at the museum. We joked about this often later on.

In the summer of 1986, I accompanied him to the excavation site in Hodoni,² where I failed to properly identify the contour of a pit. He advised me

* Scientific Researcher I, PhD habil., Institute of Archaeology and Art History Cluj-Napoca/West University of Timișoara, Romania; e-mail: floringogaltan@gmail.com.

¹ He graduated from the History and Philosophy Faculty of the University of Cluj-Napoca in 1980, with Professor Hadrian Daicoviciu as the supervisor of his undergraduate thesis (Florin Drașovean, "Cultura Starcevo-Criș în bazinul Mureșului mijlociu," in *Apulum* XIX (1981): 33-45). Subsequently, he taught at General School No. 9 in Hunedoara until 1984.

² Florin Drașovean, *Așezarea vinciană de la Hodoni* (Timișoara: Muzeul Banatului, 1991); Florin Drașovean, Dumitru Țeicu and Marius Munteanu, *Hodoni. Locuirile neolitice târzii și necropola medievală timpurie* (Reșița: Muzeul de Istorie al Județului Caraș-Severin, 1996); Florin Drașovean,

that I should continue studying the Bronze Age, as I was unequipped to tackle the Neolithic. I did just that, as at that time in the field, when one was shown a life preserver, one had to learn how to swim. Besides, there were very few archaeologists from which to learn in Cluj, among them Gheorghe Lazarovici and Tudor Soroceanu. Florin Drașovean was one of several people who changed my destiny. I remember how he tried to teach me, during my student years, how to structure pottery typologically.³ I did not enjoy the process much; it was hard work, and the results looked doubtful to me. I was much more attracted to the study of metal artifacts.

Although Florin Medeleț trained me to become an archaeologist at the museum in Timișoara and specialise in the Bronze Age of Banat, in 1990, fate saw me employed at the Cluj branch of the Institute of Thracian Studies and subsequently the Institute of Archaeology and Art History in Cluj-Napoca. Nevertheless, in 1991, I returned home to Timișoara and began working with Florin Drașovean. I first joined him on the excavation site of the cave in Românești. It was a wonderful summer, with many interesting finds.⁴ Unfortunately, we have not returned since.

During late autumn of the same year, we excavated in Foeni. I will never forget the first painted pottery fragments we discovered, nor the enthusiasm with which he shouted, ‘We have discovered the Foeni group!’⁵ At

Dumitru Țeicu and Marius Munteanu, “Câteva clarificări ale unor “Clarificări privind cercetările de la Hodoni (Jud. Timiș) din anii 1959-1960” ... și câte ceva despre un op,” in *Analele Banatului* VI (1998): 701-706.

³ The methods were innovative for Romanian research at that time, continuing and improving upon the models put forward by Professor Lazarovici: Florin Drașovean, “Așezarea neolitică de la Hunedoara – “Dealul Sânpetru,” in *Sargetia* XX (1986-1987): 12-17; Florin Drașovean, “Observații pe baza unor materiale inedite privind raporturile dintre culturile Starcevo-Criș, Vinča A și ceramica liniară în nordul Banatului,” in *Apulum* XXVI (1989): 9-48.

⁴ Florin Drașovean, Florin Gogâltan and Petru Rogozea, “Românești, „Peștera cu Apă”, com. Tomești, jud. Timiș,” in *Situri arheologice cercetate în perioada 1983-1992*, I, ed. Valeriu Sirbu (Brăila: Muzeul Brăilei, 1996), 96-97; Petru Rogozea, “New archaeological finds in the cave from Românești, Timiș county,” in *The Early Hallstatt Period (1200-700 B.C.) in South-Eastern Europe*, eds. Horia Ciugudean and Nikolaus Boroffka (Alba Iulia: Muzeul Național al Unirii, 1994), 155-166; M. Gumă, *Epoca bronzului în Banat. Orizonturi cronologice și manifestări culturale. The Bronze Age in Banat. Chronological levels and cultural entities* (Timișoara: Mirton, 1997), 64, Pl. LXXI-LXXIII.

⁵ Florin Drașovean, *Cultura Vinča târzie (faza C) în Banat. Die späte Vinča Kultur (Stufe C) im Banat* (Timișoara: Mirton, 1996); Viorica Aghițoaie and Florin Drașovean, “Date despre impresiunea unei țesături descoperită în așezarea neolitică târzie de la Foeni-“Cimitirul Ortodox,” in *Patrimonium Banaticum* III (2004): 47-49; Florin Drașovean, “Zona thessalo-macedoneană și

that time, every archaeologist dreamed of finding a new culture or at least a new cultural group. I was equally enthusiastic about my discovery of an Early Bronze Age settlement.⁶ I believe that the research we conducted in Foeni marked both of our careers (Fig. 1). Draşovean became a specialist in the Neolithic, enjoying wide international recognition,⁷ while I timidly made my way into the specialised literature of the Bronze Age in Banat.⁸ During several campaigns, we excavated Cimitirul Ortodox and other sites⁹ in an area that is currently one of the most renowned areas of Banat from an archaeological perspective.¹⁰ Throughout the same period, Draşovean continued his research in

Dunărea mijlocie la sfârşitul mileniului al VI-lea și la începutul mileniului al V-lea în. Chr.” In *Apulum* XLII (2005): 11-26; Florin Draşovean, “Înmormântările din arealul grupului cultural Foeni,” in *Analele Banatului* XIV (2006): 129-134.

⁶ Florin Gogâltan, “Foeni, eine frühbronzezeitliche Siedlung aus dem Südwesten Rumäniens. Vorläufiger Bericht,” in *Thraco-Dacica* XIV (1993): 51-64.

⁷ Florin Draşovean, “Connections between Vinča C and Tisa, Herpaly, Petreşti Cultures in northern Banat,” in *Banatica* 11 (1991): 209-212; Florin Draşovean, “Die Stufe Vinca C im Banat,” in *Germania. Anzeiger der Römisch-Germanischen Kommission des deutschen Archäologischen Institut* 72, 2 (1994): 409-425; Florin Draşovean, “Relations of the Vinca Culture, phase C with the Transylvanian region,” in *The Vinca Culture, its Role and Cultural Connections: International Symposium on the Vinca Culture, Its Role and Cultural Connections, Timișoara, Romania, October 1995*, ed. Florin Draşovean (Timișoara: Mirton, 1996), 269-279; Florin Draşovean, “Die Petreşti-Kultur im Banat,” in *Prähistorische Zeitschrift* 72 (1997): 54-80.

⁸ Florin Gogâltan, “Die Frühe Bronzezeit in Südwesten Rumäniens. Stand der Forschung,” in *Thraco-Dacica* XVI (1995): 55-79; Florin Gogâltan, “About the Early Bronze Age in the Romanian Banat,” in *The Yugoslav Danube Basin and the Neighbouring Regions in the 2nd Millenium B.C.*, ed. Nicola Tasić (Belgrade-Vršac: Serbian Academy of Sciences and Arts Institute for Balkan Studies, 1996), 43-67.

⁹ Haskel J. Greenfield and Florin Draşovean, “Preliminary report on the 1992 excavations at Foeni-Salaş: an early Neolithic Starčevo-Criş settlement in the Romanian Banat,” in *Analele Banatului* III (1994): 45-85; Florin Gogâltan, “Foeni, jud. Timiș,” in *Cronica cercetărilor arheologice. Campania 1993. A XXVIII-a sesiune națională de rapoarte arheologice, Satu Mare, 12-15 mai 1994* (Satu Mare: Muzeul Județean Satu Mare, 1994), 24; Florin Draşovean, “Regional aspects in the process of Neolithisation of the Banat (south-western Romania): the settlement of Foeni-Sălaş,” in *A Short Walk to The Balkans: The First Farmers of the Carpathian Bassin and the Adjacent Regions: Proceedings of the Conference Held at the Institute of Archaeology UCL on June 20th-22nd, 2005*, eds. Michela Spataro and Paolo Biagi (Trieste: Società per la preistoria e protostoria della regione Friuli-Venezia Giulia, 2007), 67-76.

¹⁰ Florin Draşovean and Alexandru Fota, “Noi descoperiri arheologice pe teritoriul satului Cruceni (com. Foeni, jud. Timiș),” in *Patrimonium Banaticum* II (2003): 55-67; Florin Draşovean, “Contribuții la repertoriul arheologic al județului Timiș. Topografia arheologică a comunei Foeni,” in *Patrimonium Banaticum* VIII (2018): 103-138.

Satchinez,¹¹ and started investigating the tells from Sânandrei¹² and Parța-tell
2.¹³

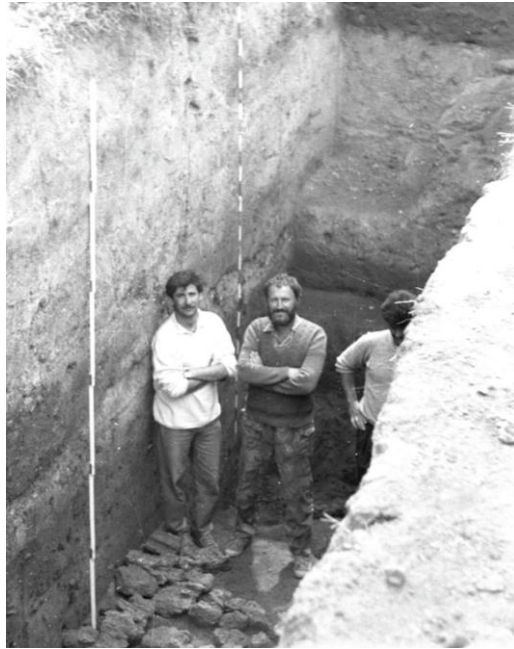


Fig. 1. Foeni- *Cimitirul Ortodox* (1993 – personal archive).

Supported by Florin Drașovean, the deputy director of the Museum of Banat at that time, I also had an opportunity to process a series of novel discoveries from its collections. These were prehistoric metal artifacts and a

¹¹ Florin Drașovean, “Așezarea neolitică de la Satchinez,” in *Cultura Vinča în România*, Eds. Gheorghe Lazarovici and Florin Drașovean (Timișoara: Muzeul Banatului, 1991), 24-26; Florin Drașovean, “Așezarea neolitică de la Satchinez,” in *Analele Banatului II* (1993): 25-48.

¹² Florin Drașovean and Florentina Marțiș, “A Clay Tablet Discovered in the Late Neolithic Settlement from Sânandrei (Timiș County, South-West of Romania),” in *Fifty Years of Tărtăria Excavations: papers presented at the International Symposium "50 Years of Tărtăria Excavations", Coronini-Pescari, Romania, 1-5 September, 2011. Festschrift in honor of Gheorghe Lazarovici on the occasion of his 73rd birthday*, Ed. John Marler (Sebastopol: Institute of Archaeomythology and Suceava: Lidana, 2014), 67-72; Florin Drașovean, “A *Spondylus Gaederopus* Linnaeus, 1753 spiny oyster pendant from the Neolithic settlement of Sânandrei-Ocsăplaț (Timiș County, western Romania),” in *Studii de Preistorie* 15 (2018): 29-50.

¹³ Florin Drașovean, *Cultura Petrești în Banat* (Timișoara: Orizonturi Universitare, 1999); Florin Drașovean, “Cultural Relationships in the Late Neolithic of the Banat,” in *Ten Years After: The Neolithic of the Balkans, as uncovered by the last decade of reseach. Proceedings of the Conference Held at the Museum of Banat on November 9th - 10th, 2007*, Eds. Florin Drașovean, Dan Leopold Ciobotaru and Margaret Maddison (Timișoara: Marineasa, 2009), 259-274.

series of materials from sites excavated over time and left unpublished.¹⁴ All served as part of my starting point when designing my doctoral dissertation on the Early and Middle Bronze Age in Banat.

Around 1995 or 1996, we quarreled and stopped talking for a few years. We were two swords that did not fit in the same sheath. He continued his research in Foeni with a new generation of archaeologists that he had over seen since their first year of university studies at the West University in Timișoara: Alexandru Szentmiklosi, Dan Leopold Ciubotaru and others.¹⁵ Subsequently, as director, he hired them at the Museum of Banat. After defending my doctoral dissertation at the beginning of 1999, of which he seemed to have had a good opinion, we began to work together in Foeni again.¹⁶ He offered to have my research published in the series that he started in 1996, the *Bibliotheca Historica et Archaeologica Banatica*.¹⁷ My dissertation was thus published in that same year.¹⁸ It provided me with an extra argument with which to convince Professor Bernhard Hänsel to support my application for an Alexander von Humboldt scholarship. The 2000 campaign in Foeni was an occasion for celebration (Fig. 2); I was awarded the Alexander von Humboldt scholarship that year.

Our relationship then took a turn for the worse again. I entered a scientific argument he had with a mutual friend,¹⁹ and I was the only one to

¹⁴ Florin Gogâltan, “Un oggetto di argento appartenendo alla fine di Hallstatt nei collezioni di Museo di Timișoara,” in *Ephemeris Napocensis* IV (1994): 17-22; Florin Gogâltan, “Bronzul mijlociu în Banat. Opinii privind grupul Cornești-Crvenka,” in *Festschrift für Florin Medeleț. Zum 60. Geburtstag*, Eds. Petru Rogozea and Valentin Cedică (Timișoara: Mirton, 2004), 79-153.

¹⁵ Florin Draşovean, Dan Leopold Ciubotaru, and Alexandru Szentmiklosi, “Foeni, jud. Timiș,” in *Cronica cercetărilor arheologice. Campania 1996. A XXXI-a sesiune națională de rapoarte arheologice București, 12-15 iunie 1996*, red. Cornelia Stoica (București: CIMEC-Institutul de Memorie Culturală, 1997): 17.

¹⁶ Florin Draşovean, Valentin Cedică, and Dan Leopold Ciubotaru and Florin Gogâltan, “Foeni, com. Foeni, jud. Timiș. Punct: Cimitirul ortodox. Cod sit: 157013.01,” in *Cronica cercetărilor arheologice. Campania 1999. A XXXIV-a sesiune națională de rapoarte arheologice Deva, 24-28 mai 2000*, red. Corina Borș, Irina Oberländer-Târnoveanu, Florela Vasilescu and Tiberiu Vasilescu (București: CIMEC-Institutul de Memorie Culturală, 2000), 37.

¹⁷ Since then, 57 volumes have been published in this series, of which six have received awards from the Romanian Academy!

¹⁸ Florin Gogâltan, *Bronzul timpuriu și mijlociu în Banatul românesc și pe cursul inferior al Mureșului. I. Cronologia și descoperirile de metal* (Timișoara: Orizonturi Universitare, 1999).

¹⁹ Florin Draşovean, “Neolithic settlements from Hunedoara-“Cimitirul Reformat” and “Grădina Castelului” and a position concerning some opinions regarding the neo-eneolithic facts from the south-west of Transylvania,” in *Patrimonium Banaticum* I (2002): 43-76.

lose something from it. This is likely why he never invited me to the excavation site in Uivar, though I was initially part of the proposed research team. The excavations performed in the tell there proved to be a model of investigation and especially of publication for an archaeological objective in Romania.²⁰

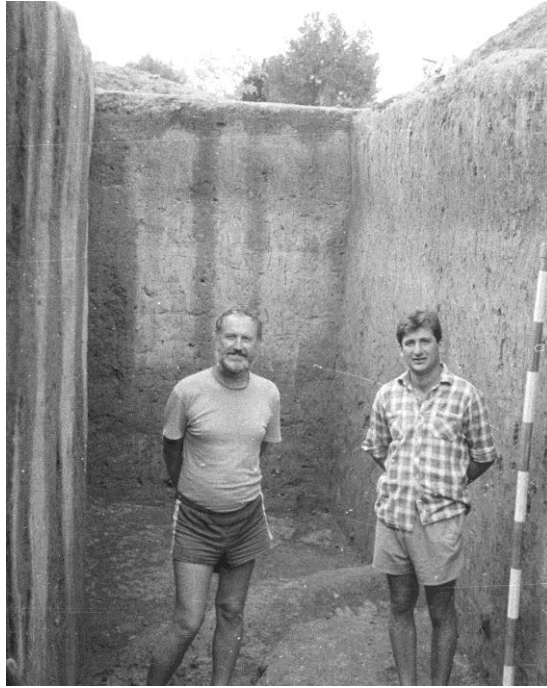


Fig. 2. Foeni- *Cimitirul Ortodox* (2000 – personal archive).

The beginning of the new millennium was prolific for the scientific activity of the newly appointed university professor at the Banat University in Timișoara. Luckily for those in our line of work, Fl. Drașovean resigned from

²⁰ Wolfram Schier and Florin Drașovean, “Vorbericht über die rumänisch-deutschen Prospektionen und Ausgrabungen in der befestigten Tellsiedlung von Uivar, Kreis Timiș, Rumänien (1998-2002),” in *Prähistorische Zeitschrift* 79, 2 (2004): 145-230; Florin Drașovean and Wolfram Schier, “The Neolithic tell sites of Parța and Uivar (Romanian Banat). A comparison of their architectural sequence and organization of social space,” in *Leben auf dem Tell als soziale Praxis, Beiträge des Internationalen Symposiums in Berlin vom 26.-27. Februar 2007*, Ed. Svend Hansen (Bonn: Dr. Rudolf Habelt GmbH, 2010), 165-188; Florin Drașovean, Wolfram Schier, Alex Bayliss, Biserka Gaydarska and Alasdair Whittle, “The lives of houses: duration, contexts and histories at Neolithic Uivar,” in *European Journal of Archaeology* 20, 4 (2017): 636-662.

his position of director of the Museum of Banat (2001) and thus gained more time for his projects. In addition to the aforementioned research in Uivar, he published and co-authored the archaeological monographs from Parţa²¹ – a site where he had been involved in excavations ever since his student years²² – as well as various syntheses regarding the Neolithic art,²³ a series of articles in international publications,²⁴ the results of preventive archaeological excavations,²⁵ and several exhibition catalogues.²⁶

²¹ Gheorghe Lazarovici, Florin Draşovean, and Zoia Maxim, *Parţa. Monografie arheologică* (Timişoara: Waldpress, 2001).

²² Gheorghe Lazarovici, Zoia Kalmar, Florin Draşovean, and Sabin Adrian Luca, “Complexul neolitic de la Parţa,” in *Banatica* 8 (1985): 7-71; Florin Draşovean and Milan Topolovcici, “O piesă de cult descoperită la Parţa,” in *Studii şi Cercetări de Istorie Veche şi Arheologie* 40, 2 (1989): 199-201; Gheorghe Lazarovici, Florin Draşovean, and Liviu Tulbure, *Sanctuarul neolitic de la Parţa* (Timişoara: Muzeul Banatului, 1991); Gheorghe Lazarovici, Florin Draşovean and Zoia Kalmar, “Complexul neolitic de la Parţa,” in *Analele Banatului* II (1993): 49-60; Gheorghe Lazarovici, Florin Draşovean and Zoia Kalmar, “Complexul neolitic de la Parţa,” in *Analele Banatului* III (1994): 106-135; Gheorghe Lazarovici, Florin Draşovean, and Zoia Kalmar, “Săpăturile arheologice de la Parţa (campania arheologică 1990),” in *Analele Banatului* IV (1995): 3-44; Gheorghe Lazarovici, Florin Draşovean, and Zoia Kalmar, “Complexul neolitic de la Parţa (III),” in *Analele Banatului* IV (1995): 45-67.

²³ Florin Draşovean and Dan Ciobotaru, *The Neolithic Art in Banat* (Timişoara: Solness, 2001); Florin Draşovean and Wolfram Schier, “Masca de lut descoperită în tellul neolitic de la Uivar (jud. Timiş),” in *Analele Banatului* XII-XIII (2004-2005): 41-56; Florin Draşovean and Dragomir Nicolae Popovici, *L’art neolithique en Roumanie/The Neolithic Art in Romania/Neolithische kunst in Rumänien* (Milano: Arte’m, 2008).

²⁴ Florin Draşovean, “Transylvania and the Banat in the Late Neolithic. The Origins of the Petreşti Culture,” in *Antaeus* 27 (2004): 27–36; Florin Draşovean, “The Starčevo-Criş and Vinča transition in northern Banat,” in *Current problems of the transition period from the Starčevo to the Vinča Culture* (Zrenjanin: National Museum, 2006), 93-109; Florin Draşovean, “Nordgriechenland und der Mittlere Donauraum zum Ende des 6. und Begins des 5. Jahrtausend v. Chr.,” in *Homage to Milutin Garašanin*, Ed. Nicola Tasić (Belgrade: Serbian Academy of Sciences and Arts, 2006), 267-276; Ferencz Horváth and Florin Draşovean, “The Remarks on the connections between the Banat and Great Hungarian Plain at the beginning of the Middle Neolithic (Satchinez – Aföld Linear Pottery – Esztár – Vinča),” in *Moments in Time, Papers Presented to Pal Raczky on His 60th Birthday*, Eds. Alexandra Anders, Gabriella Kulcsár, Gábor Kalla, Viktória Kiss, and Gábor V. Szabó (Budapest: Prehistoric Society, Eötvös Loránd University, L’Harmattan, 2013), 113-132; Florin Draşovean, “On the Late Neolithic and Early Eneolithic Relative and Absolute Chronology of the Eastern Carpathian Basin. A Bayesian approach,” in *The Neolithic and Eneolithic in Southeast Europe. New approaches to dating and cultural dynamics in the 6th to 4th millenium BC.*, Eds. Wolfram Schier and Florin Draşovean (Rahden/West.: Marie Leidorf GmbH, 2014), 129-169.

²⁵ Florin Draşovean, Doina Benea, Mircea Mare, Marius Muntean, Daniela Tănase, Mariana Crânguş, Florentina Chiu, Dorel Micle, Mariana Crânguş, Simona Regep-Vlaşci, Alexandru

He became PhD Supervisor at the ‘1 Decembrie 1918’ University in Alba Iulia in 2008 and, in 2013, at the Babeş-Bolyai University in Cluj.

Gradually, he became increasingly disappointed with those he hired at the Museum in Timișoara. It must be noted that the feeling was mutual, as numerous friends and collaborators grew distant. Still, he enjoyed the support of other younger colleagues who joined him, appreciating his scientific qualities, his dialogue instead of monologue and the collegial rather than hierarchical spirit he promoted.²⁷ He helped another Romanian archaeologist to obtain the Alexander von Humboldt scholarship. At a time in life when others begin to tell wistful stories about their archaeological youth, Florin Drașovean again made the effort to update his skills, teach us the principles of Bayesian analysis²⁸ and the importance of identifying sources of obsidian,²⁹ publish rescue excavations,³⁰ and even embark on new research projects.³¹

Szentmiklosi, Atalia Ștefănescu, and Călin Timoc, *Cercetările arheologice preventive de la Dumbrăvița (jud. Timiș)* (Timișoara: Waldpres, 2004); Florin Drașovean, Mircea Mare, Petru Rogozea, and Florentina Marțiș, “Raport de cercetare arheologică preventivă derulată în piața Timișoara 700,” in *Patrimonium Banaticum* V (2006): 61-68; Florin Drașovean, Costin Feneșan, Alexandru Flutur, Alexandru Szentmiklosi, Georgeta El Susi, Zsuzsanna Kopeczny, Hedy M-Kiss, Raul Septilici, and Niculina Dinu, *Timișoara în amurgul Evului Mediu* (Timișoara: Mirton, 2007); Mircea Mare, Daniela Tănase, Florin Drașovean, Georgeta El Susi, and Szilárd S. Gál, *Timișoara-Freidorf. Cercetările arheologice preventive din 2006* (Cluj-Napoca: Mega, 2011); Florin Drașovean and Sorin Tincu, “Păru. Unravelling the secrets of the dead in the Romanian’s largest Bronze Age cemetery,” in *Current World Archaeology* 64 (2014): 28-31.

²⁶ Alexandru Szentmiklosi and Florin Drașovean, *Arta prelucrării bronzului în Banat (mileniul al doilea în. Chr.)* (Timișoara: Muzeul Banatului, 2004; Wolfram Schier and Florin Drașovean, *Masken, Menschen, Rituale. Alltag und Kult vor 7000 Jahren in der prähistorischen Siedlung von Uivar, Rumänien. Katalog zur Sonderausstellung, 21. April - 10. Juli 2005* (Würzburg: Würzburg Lehrstuhl für Vor- und Frühgeschichtliche Archäologie, Institut für Altertumswissenschaften der Universität Würzburg, 2005).

²⁷ Florin Drașovean, Cosmin Ioan Suciu, and Dragoș Diaconescu, “Cercetările arheologice preventive din Piața Sfântul Gheorghe (2015),” in *Patrimonium Banaticum* VI (2016), 139-160.

²⁸ Florin Drașovean, “In regards to certain Late Neolithic-Early Eneolithic synchronism from Banat and Transylvania. A Bayesian approach to published absolute dates,” in *Studii de Preistorie* 10 (2013): 13-48; Alasdair Whittle, Alex Bayliss, Alistair Barclay, Bisserka Gaydarska, Eszter Bánffy, Dušan Borić, Florin Drașovean, János Jakucs, Miroslav Marić, David Orton, Ivana Pantović, Wolfram Schier, Nenad Tasić, and Marc Vander Linden, “A Vinča potscape: formal chronological models for the use and development of Vinča ceramics in south-east Europe,” in *Documenta Praehistorica* XLIII (2016): 1-60; Florin Drașovean, Wolfram Schier, Alex Bayliss, Bisserka Gaydarska, and Alasdair Whittle, “The lives of houses: duration, contexts and histories at Neolithic Uivar,” in *European Journal of Archaeology* 20, 4 (2017): 636-662; Dragomir Nicolae

After a while, I attempted once more to be by his side. Together, we published several Romanian metal artifacts from the collections of the British Museum in London. Florin Draşovean drew and described the artifacts in 2000, as the recipient of the prestigious Paul Getty scholarship.³² These were special Bronze Age artifacts, not dated to periods in which he had previously shown an interest. The article was published fittingly in *Analele Banatului*,³³ the journal that he spent 25 years building into a reference international publication.

The situation of the new National Museum of Banat in Timișoara became increasingly embarrassing. Accusations of strong language and other misconduct ended in his removal from office. The *Analele Banatului* periodical and the series *Bibliotheca Historica et Archaeologica Banatica* were ruined out of spite, ignorance and indolence. All this happened just two years before his retirement. I cannot judge for myself what happened; I know the actors well but not the screen plays or the stage director. What is clear is that the theater of events became a ruin and a blemish on the cheeks of Timișoara. I avoid the old building of the Huniade castle every time I cross the city center. The end was the one we suspected when we signed, me and other colleagues, a petition to express our professional support for Florin. He went on, foreseeably won a law suit, and was retired on 13.08.2020, one day before he turned 65 ('after 13.260

Popovici and Florin Draşovean, "Despre evoluția culturilor Precucuteni și Cucuteni. Analiza bayesiană a datelor ¹⁴C vs. crono-tipologie," in *Cercetări Arheologice* XXVII (2020): 331-386.

²⁹ Michael D. Glascock, Alex W. Barker, and Florin Draşovean, "Sourcing Obsidian Artifacts from Archaeological Sites in Banat (Southwest Romania) by X-ray Fluorescence," in *Analele Banatului* XXIII (2015): 45-50; Michael D. Glascock, Alex W. Barker, Sanda Băcucet Crişan, Florin Draşovean, Mihai Gligor, and Dimitrie Negrei, "Sourcing Obsidian Artifacts from Archaeological Sites in Central and Western Romania by X-ray Fluorescence," in *Analele Banatului* XXIV (2016): 75-85; Michael D. Glascock, Alex W. Barker, Ioan Alexandru Bărbat, Bogdan Bobână, Florin Draşovean, and Cristian Virag, "Sourcing Obsidian Artifacts from Archaeological Sites in Central and Northwestern Romania by X-ray Fluorescence," in *Ephemeris Napocensis* XXVII (2017): 175-186.

³⁰ Florin Draşovean, Zsuzsanna Kopeczny, Georgeta El Susi, Florentina Marţiş, and Alexandru Flutur, *O contribuție la istoria Timișoarei medievale. Cercetările arheologice preventive efectuate pe strada Emanuil Ungureanu nr. 2* (Timișoara: Mega, 2018).

³¹ Adrian Ardeţ, Florin Draşovean, and Petru Urdea, "Complexul megalitic de la Muntele Mic," in *Tibiscum. Arheologie* 6 (2018): 15-36.

³² Florin Draşovean, "Despre unele practici de magie neagră din neoliticul bănăţean. O abordare etno-arheologică," in *Analele Banatului* VI (2005): 5-12.

³³ Florin Gogăltan and Florin Draşovean, "Piese preistorice din cupru și bronz din România aflate în colecțiile British Museum, Londra. I," in *Analele Banatului* XXIII (2015): 119-150.

days dedicated to his passion'),³⁴ without a retirement party or any gesture of appreciation. He became a researcher at the Romanian Academy, the Timișoara branch, and completed this autumn a first volume (hundreds of pages thick) that details the research in Uivar.

This is my story with and about Florin Drașovean. It will certainly continue, should we both stay healthy. I can thus only conclude with his own cryptic advice: 'be harsh, but tough!'

³⁴ See Facebook Florin Drașovean, 13 august 2020.